

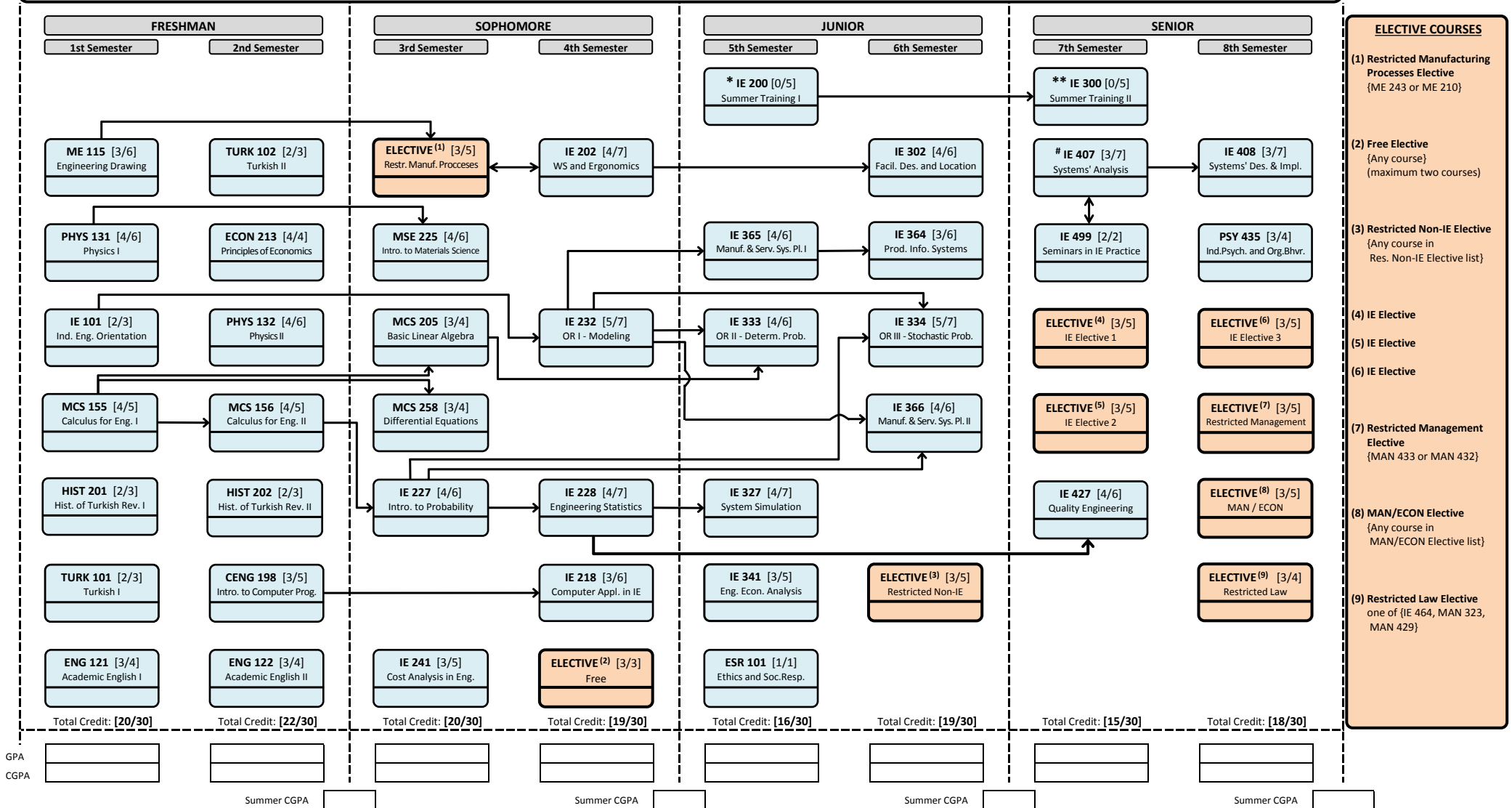
Student ID:

Name:

(Last update: 20.04.2015)

Industrial Engineering Curriculum Prerequisite Diagram

Applies starting from 2015-2016 Academic Calendar



Special Prerequisites

(*) IE 200: (ME 210 or ME 243) and (IE 202 or IE 232)

(**) IE 300: IE 200 and (at least four of {IE 302, IE 311, IE 327, IE 333, IE 334, IE 341, IE 364, IE 365, IE 366})

(#) IE 407: (IE 311 or IE 364) and (IE 333 or IE 334) and (at least two of {IE 302, IE 327, IE 341, IE 365, IE 366})

Legend:

A → B Prerequisite (Course A must be satisfactorily passed to take Course B)

A ↔ B Corequisite (Courses A and B can be taken in the same semester)

[C/D] : Course credit (C) / ECTS Credit (D)